

GREENWALL CABLE SYSTEM

/ STAINLESS CABLES / FASTENERS
CONNECTORS FOR GREEN WALL



- ✓ Easy to Maintain
- ✓ Easy to Implement
- ✓ Durable & Elegant



Creating a better environment

d'Armour Stainless Cable System was the preferred choice for

Gardens by the Bay





GARDENS BY THE BAY





Introduction

Stainless steel cables have a wide spectrum of usage as railings, architectural wall features and green wall.

It allows vines to creep around them to create a distinctive feature yet has an excellent visual aesthetic appeal. It promotes overall cooling ambient, saving on energy bills, which is the ultimate answer to an increasing green conscious world.

Armour stainless steel cable system is created as a niche product. Every part is carefully designed and crafted by our team of engineers so that they can be used with maximum flexibility and ease. The cables, connectors and accessories are made from high grade of stainless steel 316 that spell unmatched quality to withstand the test of time.



Reliability

d'Armour stainless steel cable system was chosen by many prestigious and iconic projects.

One of which was the *Gardens by the Bay*, located in Singapore which showcases horticulture and contemporary garden artistry.

Easy Implementation

Hassle free installation, no precise measurements is required. The flexible innovative design of the cable system enable quick and easy implementation.

Our professionals are ever ready to provide our clients with the best technical advice and support.

Applications

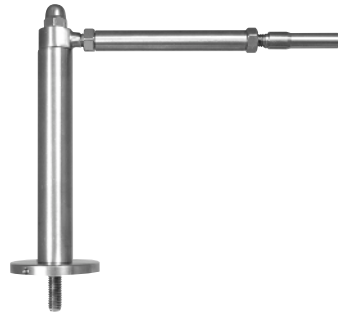
- Architectural Wall features
- Green cage, Green Walls
- Railings, Display Racks





COMPONENT " A "

GR316 S/S consisting of Dome Nut, Eye Bolt, Wall Adaptor [WA-125-5-316](#).



COMPONENT " B "

GR316 S/S consisting of Dome Nut, Pad Eye Termination End with Adjustable Knob [SAT\(e\)-197-5-316](#), Wall Adaptor [WA-125-5-316](#).



COMPONENT " C "

GR316 S/S Cross Clamp [CC-20-5-316](#).



COMPONENT " D "

GR316 S/S Cross Clamp [CC-20-5-316](#) with Extended Wall Adaptor.

COMPONENT " A "

COMPONENT " D "

COMPONENT " C "

COMPONENT " B "





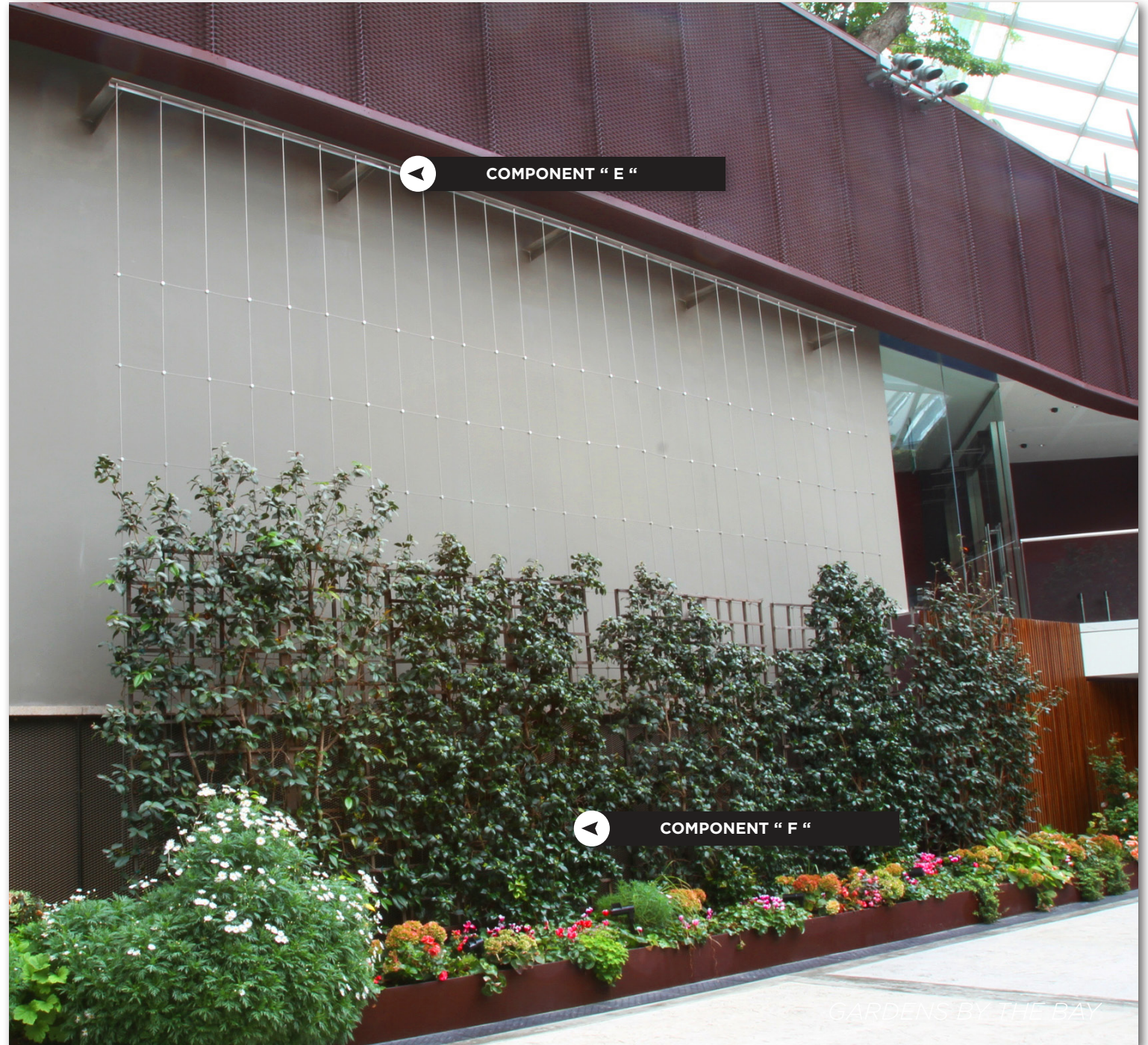
COMPONENT " E "

GR316 S/S Swaged Radius Head
End [SR-42-5-316](#).



COMPONENT " F "

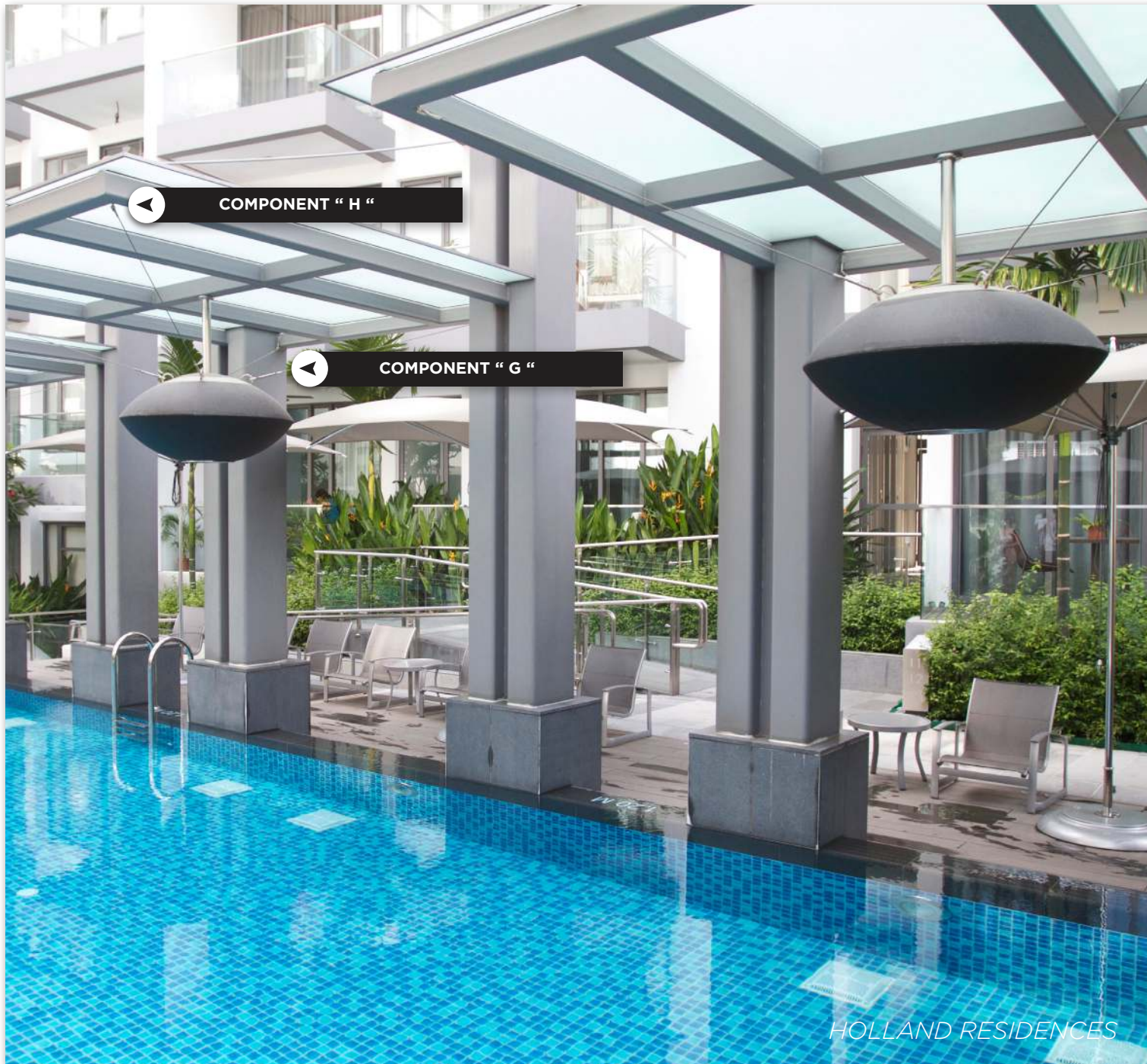
GR316 S/S Screw Adjustable
Termination End [SAT\(e\)-197-5-316](#).



COMPONENT " E "

COMPONENT " F "

GARDENS BY THE BAY



COMPONENT " H "



COMPONENT " G "

HOLLAND RESIDENCES



COMPONENT " G "

GR316 S/S consisting of Swivel Termination End *ST(e)-165-5-316*



COMPONENT " H "

GR316 S/S consisting of Swivel Termination End *ST-70-5-316* and Wall Adaptor *WA-50-5-316*.





PRODUCT DATABASE



Swaged Radius Head End
SR-42-5-316



Screw Adjustable Termination End
SAT(e)-197-5-316



Wall Adaptor
WA-115-5-316
WA-125-5-316



Cross Clamp
CC-20-5-316



Eye Bolt Termination End With Adjustable Knob
EBT-175-5-316



Wall Adaptor
WA-50-5-316



Swivel Termination End
ST-70-5-316



Swivel Termination End With Adjustable Knob
ST(e)-165-5-316



Junction Wire Connector
JW-20-5-316



Dome Nut
DN-8-316



PVC End Cap
EC-10-PVC



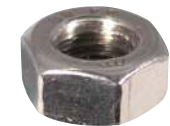
Ring Nut
RN-50-5-316



Screw Stud
SS-M8-45-316



Threaded Stud
TS-M8-95-316



Hexagonal Nut
HN-M8-316



HOLLAND RESIDENCES



Composition Ranges for 304 / 316 Grade of Stainless Steels

Grade		C	Mn	Si	P	S	Cr	Mo	Ni	N
304	min	-	-	-	-	-	18.0	-	8	-
	max	0.08	2.0	0.75	0.045	0.03	20	-	10.5	0.10
316	min	-	-	-	0	-	16.0	2.0	10.0	-
	max	0.08	2.0	0.75	0.045	0.03	18.0	3.0	14.0	0.10

Other Properties of 316 Stainless Steel

Title	Units	Value
Density	kg/m ³	8000
Tensile Strength	Mpa (min)	515
Yield Strength	Mpa (min)	205
Elongation	% in 50mm (min)	40
Hardness	Rockwell B (max)	95
	Brinell (Max)	217
Thermal Conductivity	At 100°C	16.3
	At 500°C	21.5
Electrical Resistivity	n Ω m	740

Test Method Adopted

Mechanical Load Test on Cable	ASTM A370 - 10	Ultimate Tensile Load 11.26KN
Chemical Analysis	ASTM A751 - 2008	Ultimate Tensile Strength 225N/mm
Determination of Carbon and Sulphur Content	ASTM E1019 - 2008	

Care and Maintenance

d' Armour uses the best grade of stainless steel so as to minimize cost to maintain after they are implemented.

The high quality 316 grade stainless steel has superior corrosion resistance. Although it is not rust prove when expose to extreme conditions, with proper care and maintenance, the cables and accessories will be able to maintain its lustre and durability.

- Never clean with corrosive cleaning agent
- Never have consistent contact with other metals
- Never sand the material with sandpaper or steel wool
- Always regularly clean with mild soap and warm water
- Always use the recommended cleaning tool
- Always check the cables are properly tension at all times



Important Notes

All information supplied in this brochure is to our best knowledge. They should be used as a guide and not as a guarantee.

Technical specification of this brochure are subjected to changes without notice.

All Rights Reserved.
Information in this brochure is provided by Stelatex Industries Pte. Ltd. a company incorporated in Singapore in 1992. This brochure is printed in 2013.

Your Local Representative

